

Application Block

# E-MOBILITY SOLUTIONS

## Driving the Future of Mobility

Protecting and powering next-generation electric vehicles requires more than speed—it requires safety, stability, and reliability. Our MOVs, thermistors, and interconnects ensure smooth energy transfer across onboard chargers, traction inverters, and battery packs, helping automakers deliver dependable performance mile after mile.



Scan the QR code to learn more

### EV Charging Gun EV Cables (CCS-2)



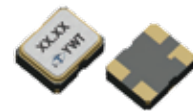
### Infotainment Charging Port USB Type-C - MMi



### Electric Motor & Drivetrain Flecto Connectors - BBi



### Electric Motor & Drivetrain Crystals / Oscillators



### Power Distribution Units (PDUs) Fluid Connectors - MMi



## OUR RECOMMENDATIONS



**EV Charging Gun**  
HOTRON



**Press-Fit Terminals - MMi**  
Harwin



**Thin Prismatic, Supercapacitors**  
Cap-XX



**Flecto Connectors - BBi**  
Harwin

Vehicle Control Unit & Advanced Driver Assistance Systems (VCU, ADAS)  
Spacer & Pannut - MMi



HARWIN Asia

Vehicle Control Unit & Advanced Driver Assistance Systems (VCU, ADAS)  
Contact Pads - EZi



HARWIN Asia

Radar / LiDAR  
Fakra Cable



HL  
HI-LINK ITC

Vehicle Control Unit & Advanced Driver Assistance Systems (VCU, ADAS)  
Buzzer / Speaker



OBO Pro.2

Vehicle Control Unit & Advanced Driver Assistance Systems (VCU, ADAS)  
Sockets - EZi

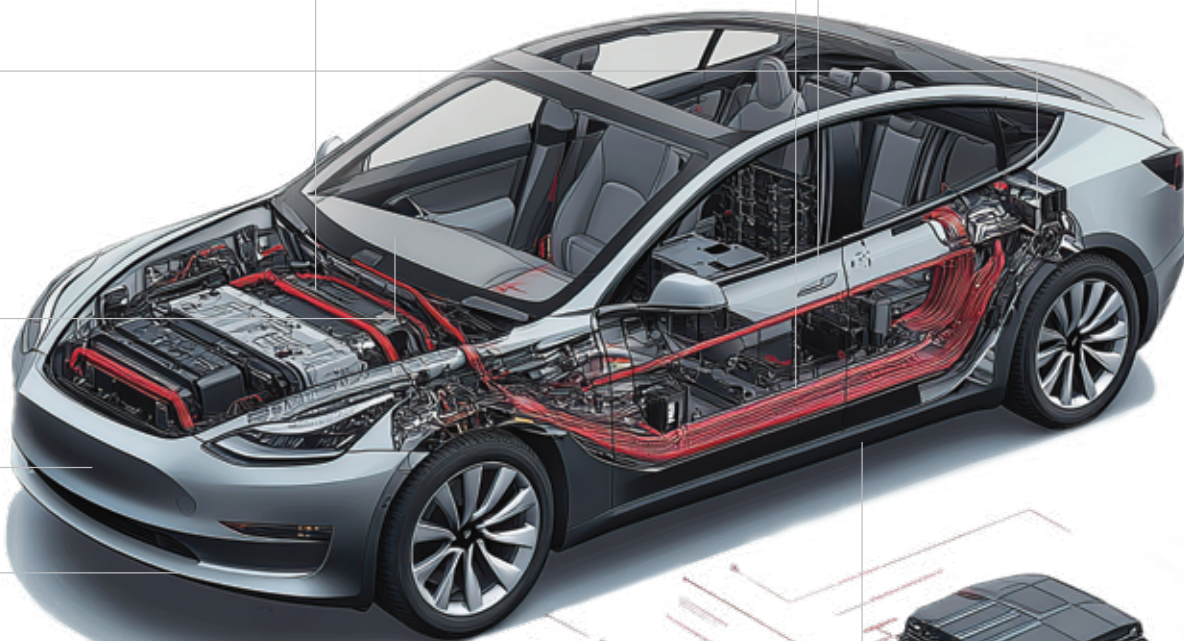


HARWIN Asia

Smart Key Fobs  
Thin prismatic - Supercapacitors



capXX



Traction Inverter / On-Board Charger (OBC)  
MOV (Metal Oxide Varistor)



WLSN

Telematics & V2X (Vehicle-to-Everything)  
Antennas (Internal/External) - MMi



HARWIN Asia

Battery Management System (BMS)  
Cylindrical Supercaps



capXX

Traction Inverter / On-Board Charger (OBC)  
High Voltage MELF Resistors



Fichteln

Telematics & V2X (Vehicle-to-Everything)  
BLE, Wi-Fi, Cellular Modules



Lierda  
利尔达

Battery Management System (BMS)  
Press-Fit Terminals - MMi



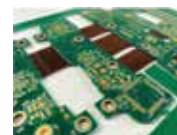
HARWIN Asia

Traction Inverter / On-Board Charger (OBC)  
Spring Contacts - EZi



HARWIN Asia

Battery Management System (BMS)  
Heavy Copper / Rigid-Flex



SGCircuits  
PCB Group  
for excellent customer solutions