



## MODEL NO : OBO-27335

**Features : Self Drive & Lead Pin Type.**

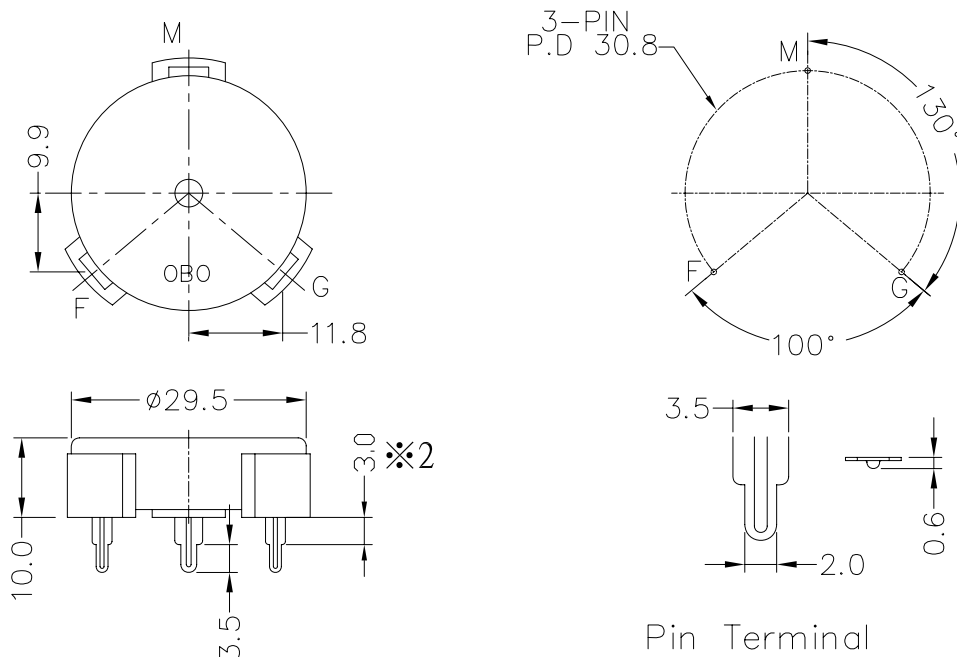
**Conformity RoHS Directive ( 2002/95/EC ) Requests. ※1**

### 1 、 General Specifications :

Items	Specification
1.1 Sound Pressure Level	85dB min./30cm/DC9V
1.2 Oscillating Frequency	3.5 ± 0.5KHz
1.3 Current Consumption	9mA max./DC9V
1.4 Operating Voltage	DC 3 to 27V
1.5 Case Material	PC (UL 94V-2)
1.6 Lead Pin Material	Phosphor Bronze
1.7 Operating Temp. Range	-20°C to +70°C
1.8 Storage Temp. Range	-40°C to +85°C
1.9 Weight	4.4 gms

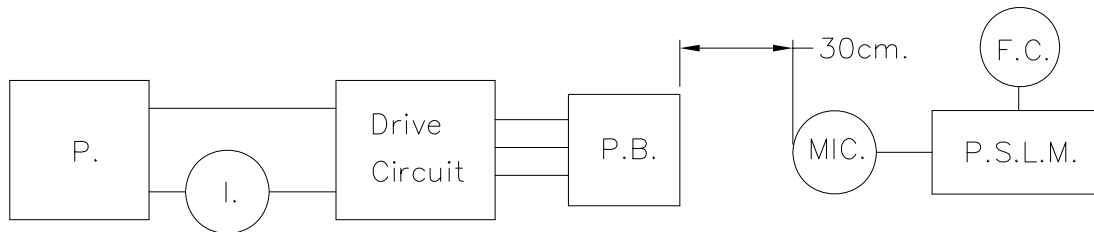
### 2. Mechanical Layout & Dimensions

Unit : mm      Tolerance : ±0.5 mm

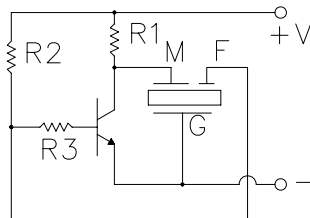


### 3、Test Method :

#### 3.1 Standard Test Diagram



- P. : DC Power Supply GPC-3030D or Equivalent
- MIC. : B&K-4176 Micphone or Equivalent
- P.S.L.M. : B&K-2232 Precision Sound Level Meter or Equivalent
- I. : GDM-8145 Multimeter or Equivalent
- F.C. : GFG-8016G or Equivalent
- P.B. : Piezoelectric Buzzer



- R1: 561
- R2: 104
- R3: 562
- Tr: 2SC2458Y

#### 3.2 Standard Test Condition

Part shall be measured under a condition(Temperature: +5 to +35°C, Humidity: 45% to 85%R.H.) unless the standard condition (Temperature: +25±3°C, Humidity: 60±10%R.H.) is regulated to measure.

**4、Soldering Condition : ※1**

4.1 Wave Soldering

Peak temperature	Dipping time	Soldering
+ 260°C	5 seconds	1 time

4.2 Hand Soldering

Iron Tip Temperature	Soldering time
+ 380°C Max.	Duration 3 seconds Max.

**5、Environment-related substances to be controlled. ※1**

◎ Piezoelectric Ceramic Disc.

RoHs Annex :

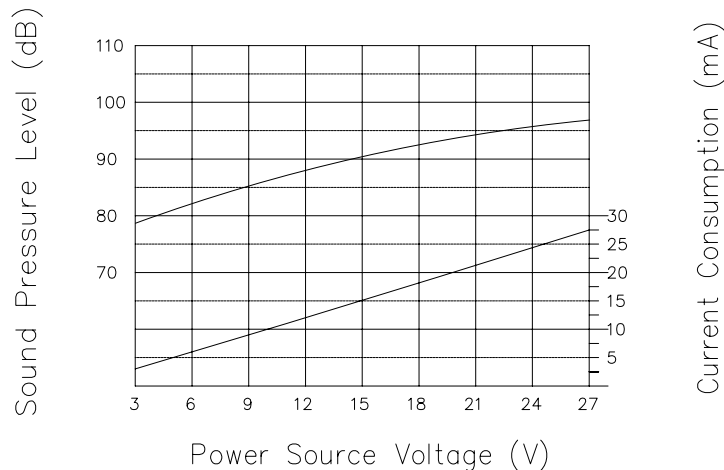
Application of lead, mercury, cadmium and hexavalent chromium, which are exempted from the requirement of article 4(1).

\* Lead in electronic ceramic parts.(e.g. piezoelectronic devices).

**6、Voltage/Sound Pressure/Current Consumption**

Measurement distance : 30cm. / Current consumption by GDM-8145

Sound level meter by B&K-2232 / DC power supply by GPC-3030D



**7、Packing Information :**

