



# OBO Pro.2

## SPECIFICATIONS

MODEL NO

OBO-28008F-71

OBO Pro.2 INC.

SHEET

2 OF 5

PART NAME  
DYNAMIC SPEAKER

文件发行章

MODEL NO : OBO-28008F-71

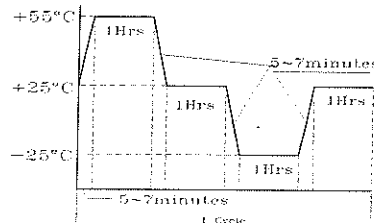
Features:Conformity RoHS Directive(2002/95/EC) Requests.

### 1. General Specifications

Items	Spec.
Weight	Approx 4.0 Grams
Magnet	Materials : NDFEB      Size : $\phi$ 9.5*1.5mm
Nominal Impedance	8 Ohm $\pm$ 15%      At 1000 Hz
Power Rating	Normal 1.0W.      Maximum 2.0W.
Lowest Resonant Frequency	550 $\pm$ 150Hz
Output Sound Pressure Level (S.P.L)	97 $\pm$ 3dB /1.0W/0.1Meter Average at 1000,1200,1500,2000Hz.
Frequency Response	F0~20KHz      Average SPL-10dB
Distortion	5% Maximum At 1200Hz/1.0W
Diaphragm over buffer	Must be Normal Tested by 2.83Volts Sin wave
Polarity	Diaphragm shall move Forward when Apply a Positive DC Current to end of the red line(Polarity"+")
Operating Temperature	-25 $^{\circ}$ C to +50 $^{\circ}$ C
Storage Temperature	-25 $^{\circ}$ C to +55 $^{\circ}$ C

### 2. Environmental Test

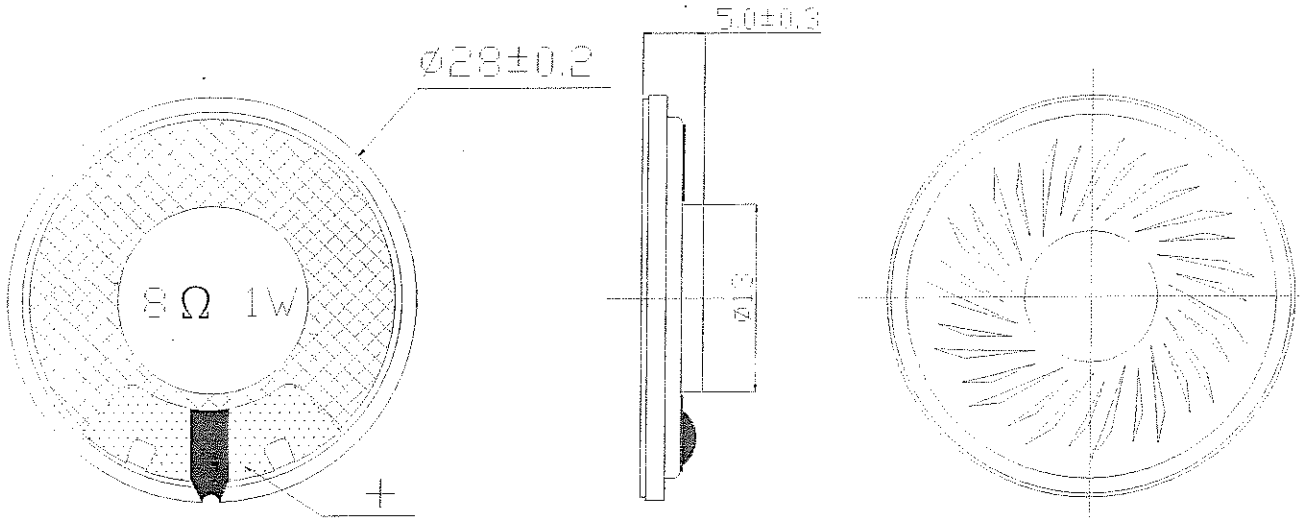
Humidity Test	Temperature:	+40 $^{\circ}$ C $\pm$ 3 $^{\circ}$ C
	Relative Humidity:	90% ~ 95%
	Duration:	96 Hours
	Duration of recovery:	6 Hours
Temperature Cycle Test	Low Temperature:	-25 $^{\circ}$ C $\pm$ 3 $^{\circ}$ C
	High Temperature:	+55 $^{\circ}$ C $\pm$ 3 $^{\circ}$ C
	Duration of recovery:	1 Hours
	Duration of Transfer Time:	Less Than 5 to 7Minutes
Cycle:	3 Cycles	
Load Test	White Noise Without Weighted Filter 2.83 Volts.(RMS) 96 Hrs. 20~20,000Hz Resonant Frequency.	
Drop Test	75 cm Free Falling On Concrete Floor, 10 Times.	
Vibration Test	Vibration Direction:	3 axes
	Mounting:	Unit Shall Be Rigidly Restrained On The Table
	Frequency:	1,000 Cycle/Minute
	Amplitude:	1.5m/m
	Endurance:	1 Hour in Each Plane
Duration of Transfer Time:	Less Than 5 Minutes	



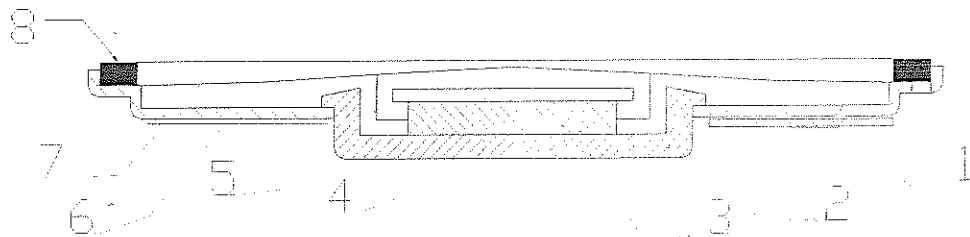
### 3. Mechanical Layout And Dimensions

#### 3.1 Dimensions

Unit: mm Tolerance:±0.3



#### 3.2 Construction Diagram

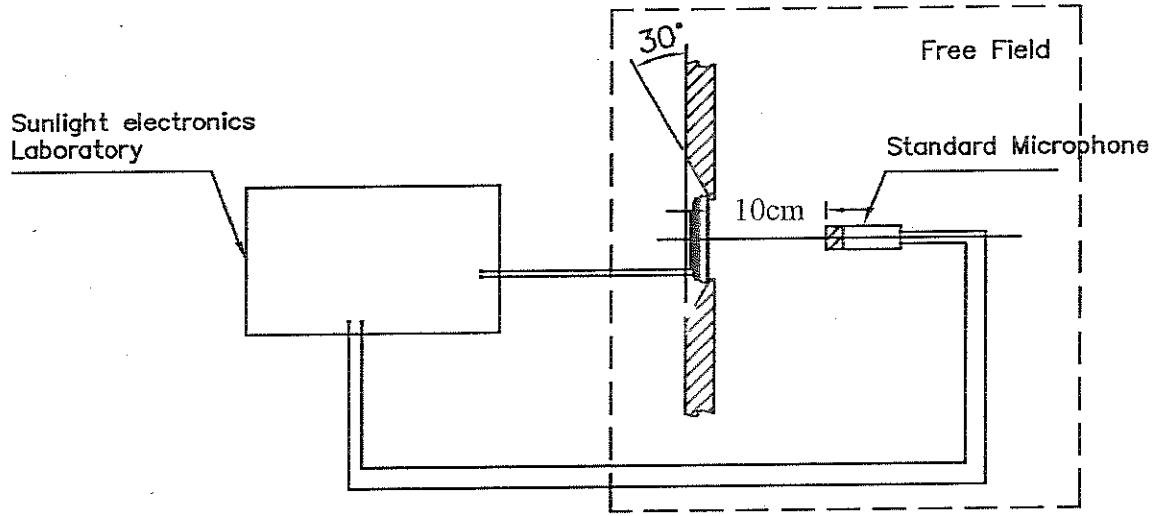


8	GASKET	ABS	1
7	DIAPHRAGM	MYLAR	1
6	CLOTH	CLOTH	1
5	VOICE COIL	DIA 10.3mm	1
4	WASHER	SPCC	1
3	MAGNET	NdFeB	1
2	YOKE	SPCC	1
1	TERMINAL	P.C.B	1
NO	PART NAME	MATERIAL	QTY

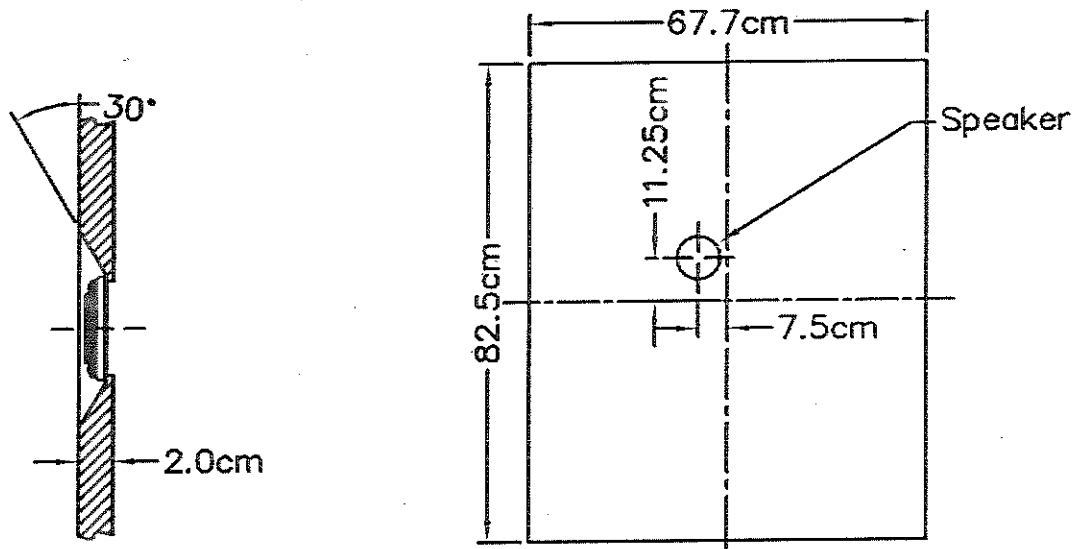
### 4. Test Method

#### 4.1 Measurement Diagram

Electroacoustic  
Testing Adapter



#### 4.2 Standard Baffle



**OBO Pro.2**

**SPECIFICATIONS**

MODEL NO  
OBO-28008F-71

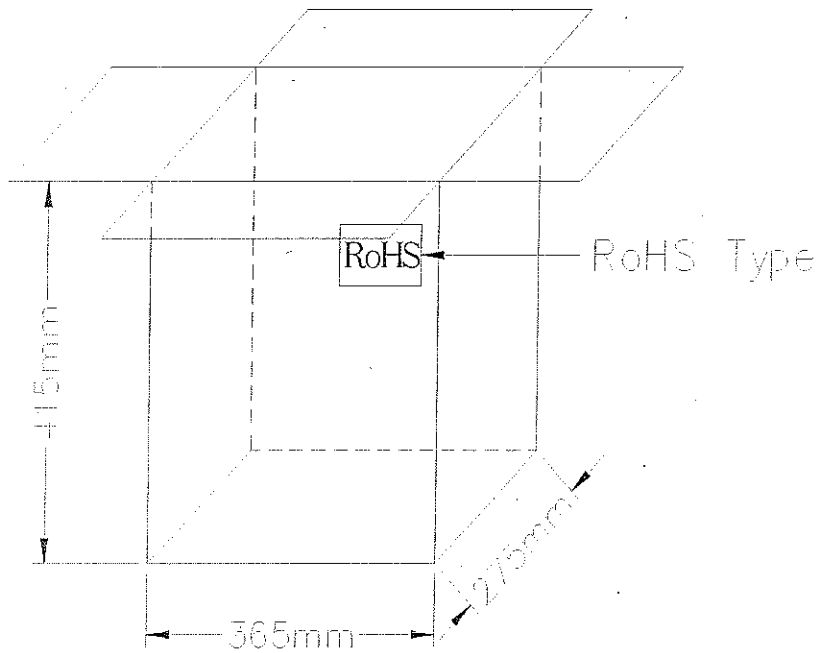
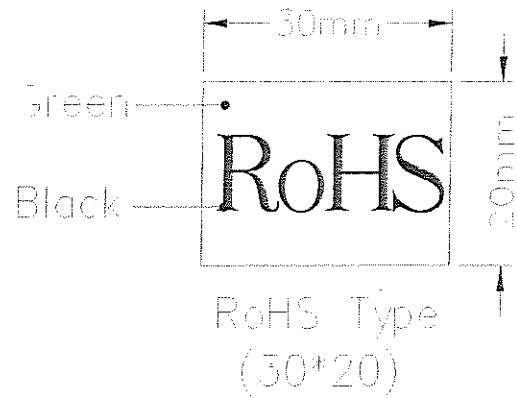
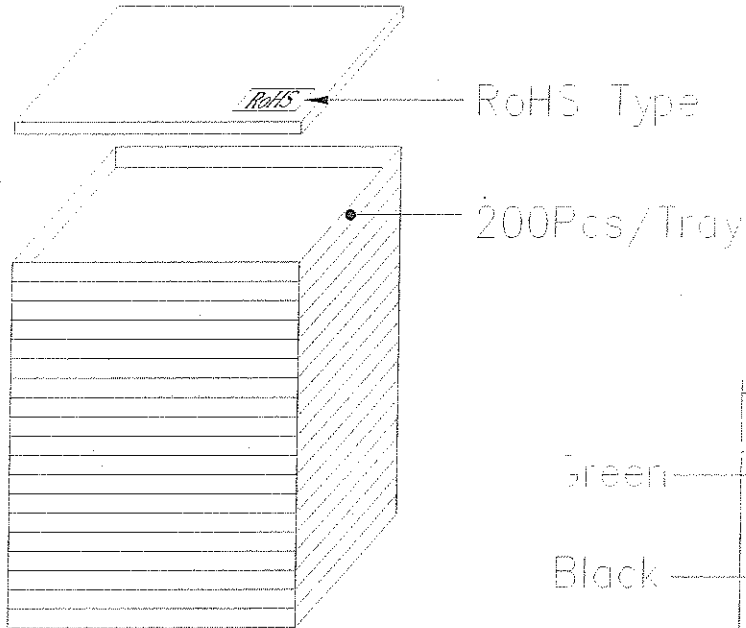
PART NAME  
DYNAMIC SPEAKER

OBO SHEET INC.

5 OF 5  
2011.05.29

文件发行章

5.Packing



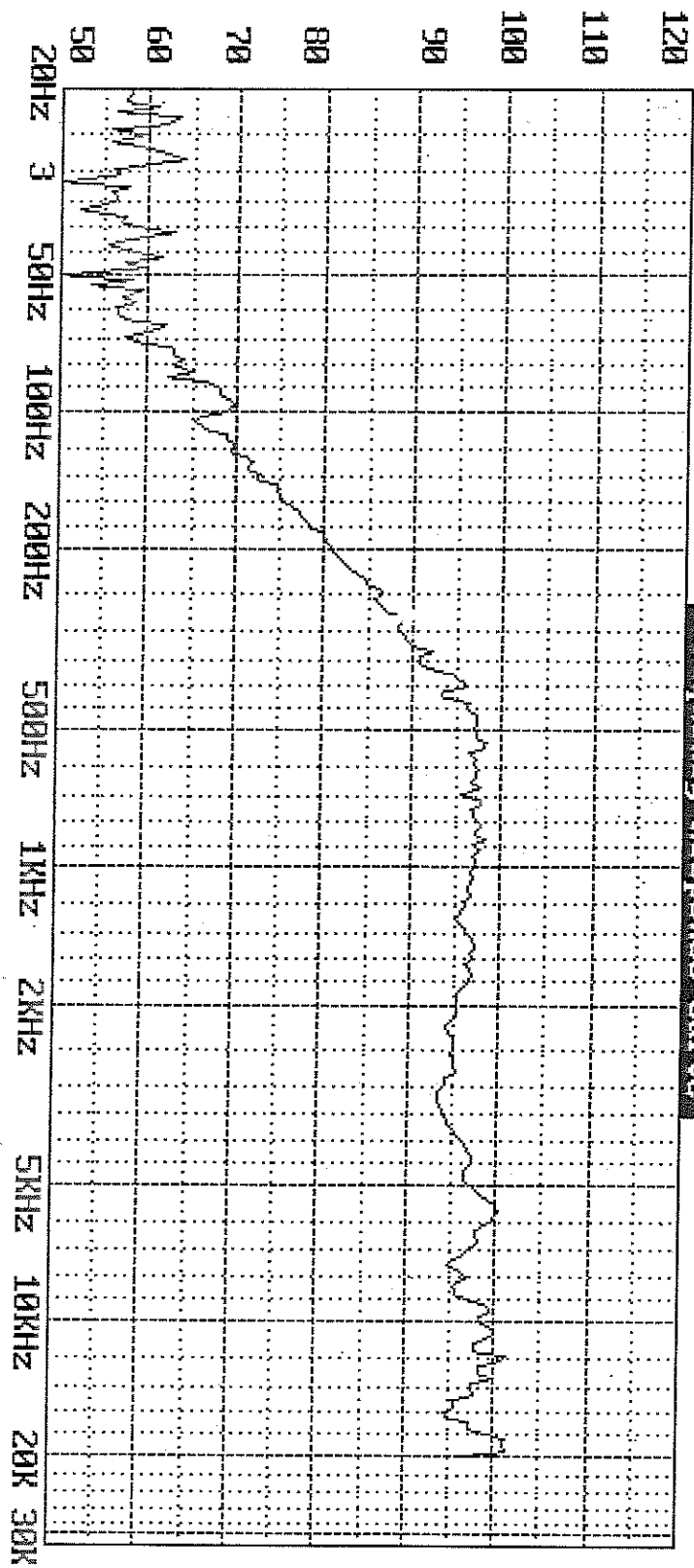
2000Pcs/Carton  
10Tray(365\*275\*415mm)

Firm:   
 Model:   
 1000Hz Sens. = 97.2dB SPL Pass F.R.: Pass DCR: 9.43R Pass   
 Average SPL: 96.4dB SPL Pass (1000;1200;1500; 2000Hz) Sweep Speed: 1/24 Oct.

DATE: 12-19-2011 TIME: 06:13:31

34

dB SPL Frequency Response curve B 6.18



Voltage applied for **F.R.** = 2.830V **Start F.** = 20Hz **Stop F.** = 20000Hz  
 Measuring Distance = 0.10M

Mfg.:   
 Measured using Sunlight 1600; Fax: 886-2-22230727