





# SPECIFICATIONS

MODEL NO  
OBO-50008G-01

PART NAME  
DYNAMIC SPEAKER

SHEET  
2 OF 6

MODEL NO : OBO-50008G-01

Features:Conformity ROHS Directive(2002/95/EC) Requests.

## 1. General Specifications

Items	Spec.
Magnet	Materials: Rare Earth Size: 12.5*1.8mm
Weight	Approx 11.0 Grams
Nominal Impedance	8Ohm±15% At 1000 Hz
Power Rating	Normal 0.2W. Maximum 0.5W.
Lowest Resonant Frequency	400±150Hz.
Output Sound Pressure Level (S.P.L)	82±3dB /0.2W/0.5Meter Average at1000,1200,1500,2000Hz.
Frequency Range	280 ~ 11,000Hz. Average SPL -10dB.
Distortion	5% Maximum At 1000Hz/0.2W
Abnormal Sound Test	Must be Normal Tested by 1.26Volts. Sine Wave.
Polarity	Diaphragm shall move Forward when Apply a Positive DC Current to the “+” or “Marked” Terminal.
Operating Temperature	-25°C to +50°C
Storage Temperature	-25°C to +55°C

## 2. Environmental Test

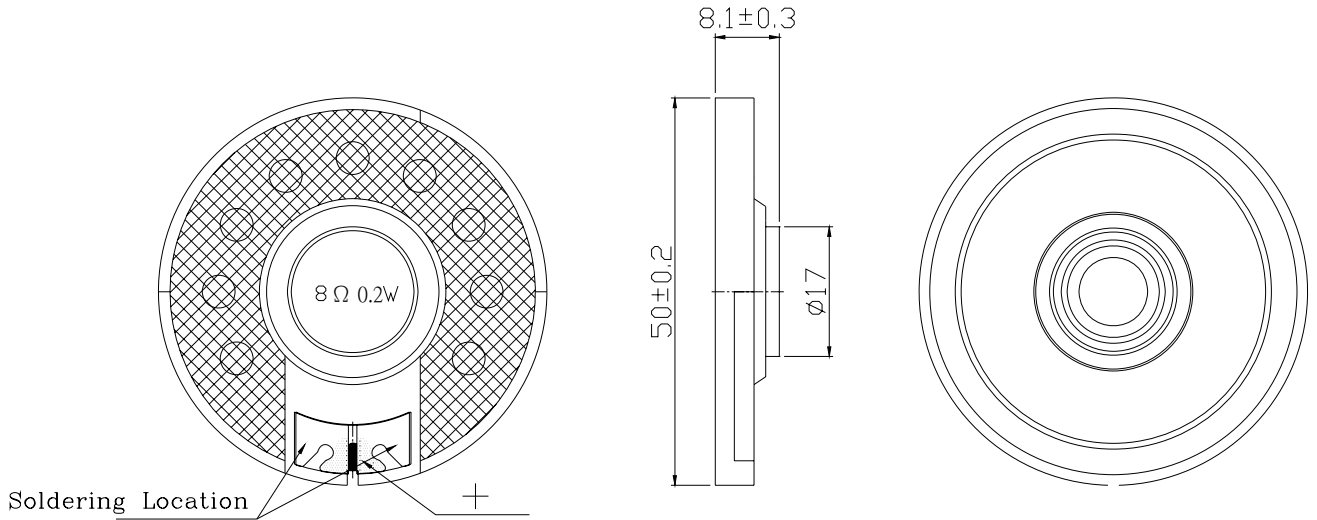
Humidity Test	Temperature: +40°C±3°C Relative Humidity: 90% ~ 95% Duration: 96 Hours Duration of recovery: 6 Hours	
Temperature Cycle Test	High Temperature: +55°C±3°C Low Temperature: -25°C±3°C Duration of Exposure: 1Hour Duration of Transfer Time: Less Than 5 to 7Minutes Cycle: 5 Cycles	
Vibration Test	Vibration Direction: 3 axes Mounting: Unit Shall Be Rigidly Restrained On The Table Frequency: 10-55Hz Amplitude: 1.5m/m Endurance: 2 Hour in Each Plane Duration of Transfer Time: Less Than 5Minutes	
Load Test	White Noise With Weighted Filter 1.26Volts.(RMS) 100 Hrs. 20~20,000Hz Resonant Frequency.	
Drop Test	Drop the speakers contained in normal box onto the board 40mm thick 10 time from the height of 75cm.	

**3. Mechanical Layout And Dimensions**

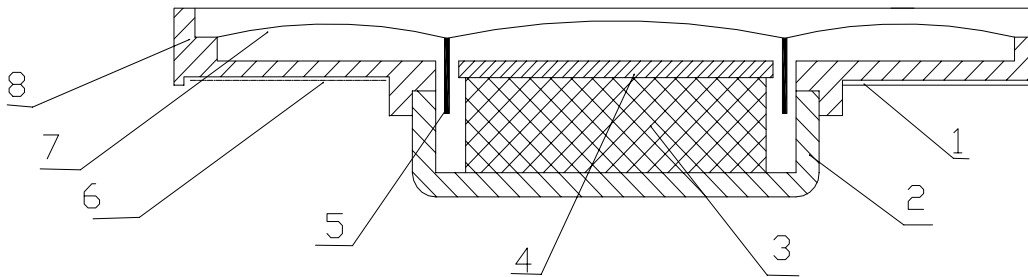
**3.1 Dimensions**

※1

Unit: mm Tol: ±0.5



**3.2 Construction Diagram**

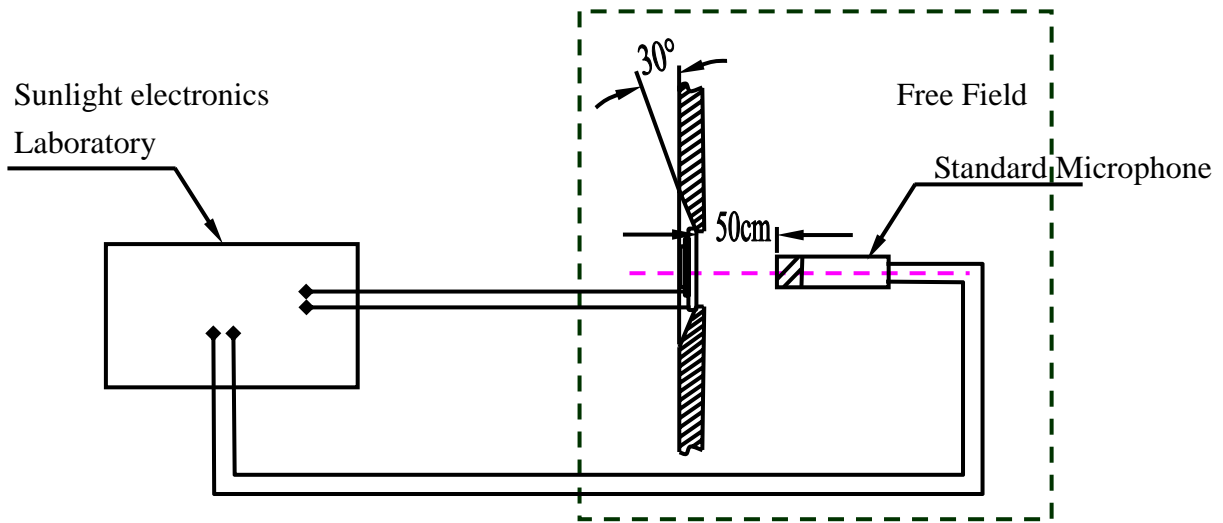


10			
9			
8	PLASTICS CASE	ABS	1
7	DIAPHRAGM	MYLAR	1
6	CLOTH	CLOTH	1
5	VOICE COIL	DIA 13.4mm	1
4	WASHER	SPCC	1
3	MAGNET	NdFeB	1
2	YOKE	SPCC	1
1	TERMINAL	P.C.B	1
NO	PART NAME	MATERIAL	Q'TY

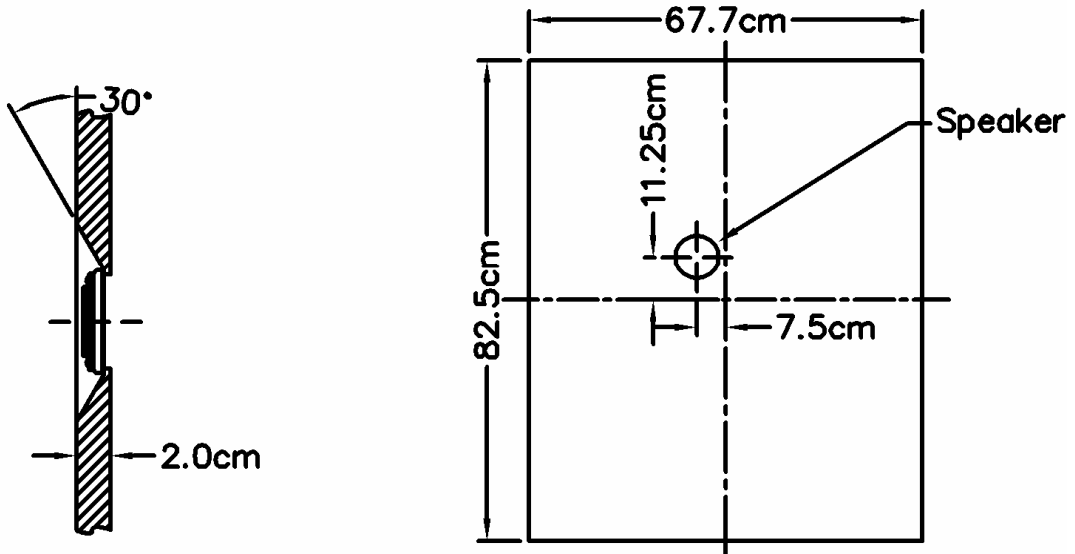
**4. Test Method**

**4.1 Measurement Diagram**

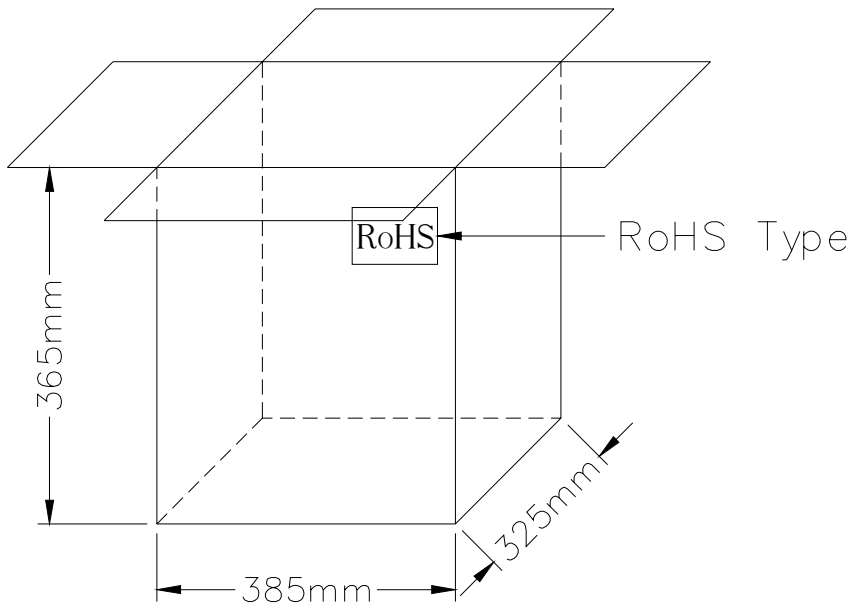
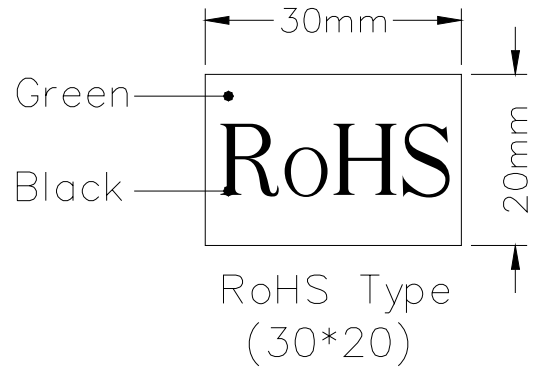
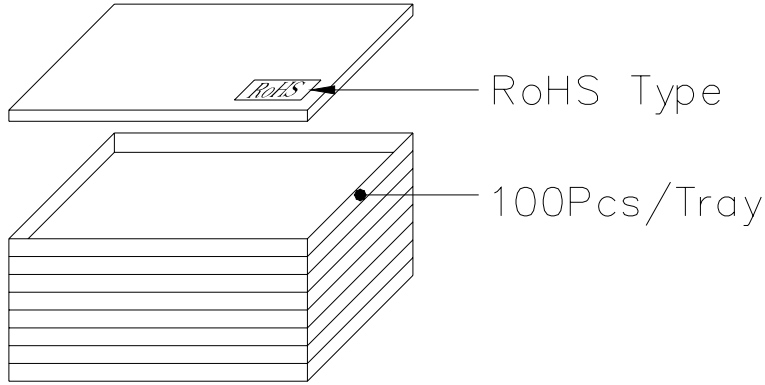
Electroacoustic  
Testing Adapter



**4.2 Standard Baffle**



**5.Packing**



600Pcs/Carton  
6Tray(385\*325\*365mm)

### 6.Frequency Response Cur

