



SPECIFICATIONS

MODEL NO
OBO-50008P-31

PART NAME
DYNAMIC SPEAKER

SHEET
2 OF 5

MODEL NO : OBO-50008P-31

Features:Conformity RoHS Directive(2002/95/EC) Requests.

1. General Specifications

Items	Spec.
Weight	Approx 12.4Gram
Nominal Impedance	8 Ohm±15% At 1000Hz. At 1V
Power Rating	Normal 2.0W. Maximum 2.5W.
Lowest Resond Frequency	600 ±20%Hz At 1.0V
Output Sound Pressure Level (S.P.L)	88 ±3 dB/1.0W/0.5M Average at 1000,1200,1500,2000, Hz.
Frequency Response Range	400~5,000Hz Average SPL-10dB
Distortion	10% Max 1000Hz/1.0W
Abnormal Sound Test	Must be Normal Tested by 4.0 Volts. Sine Wave.
Polarity	Diaphragm shall move Forward when Apply a Positive DC Current to the “+” or “Marked” Terminal.
Operating Temperature	-25°C TO +65°C
Storage Temperature	-25°C TO +65°C

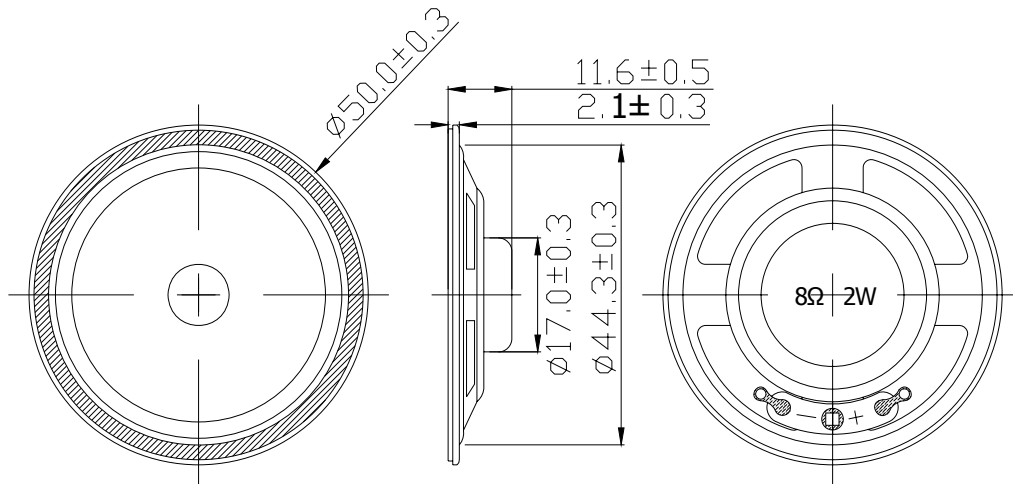
2. Environmental Test

Humidity Test	Temperature:	+40°C±2°C
	Relative Humidity:	90% ~ 95%
	Duration:	96 Hours
	Duration of recovery:	6 Hours
Temperature Cycle Test	Low Temperature:	-25°C±2°C
	High Temperature:	+65°C±2°C
	Duration of recovery:	1Hour
	Duration of Transfer Time:	Less Than 5 to 7Minutes
	Duration of Exposure:	1Hour
Cycle:	5 Cycles	
Load Test	White Noise With Weighted Filter 4.0 Volts.(RSM) 96 Hrs	
Drop Test	75cm Free Falling On Counter Floor,10 Times.	
Vibration Test	Frequency 30 ± 15 Hz, Amplitude 1.5 mm for 2 Hours per axis(x. y. z axis)	

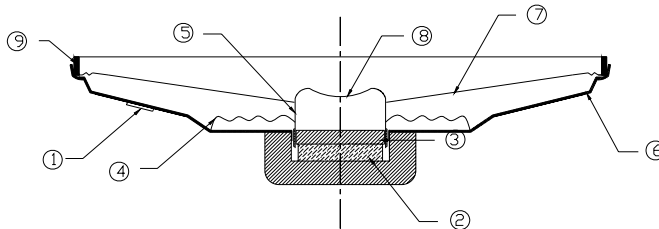
3. Appearance Drawing

3.1 DIMENSIONS

Unit: mm Tolerance:±0.3



3.2 Speaker Construction



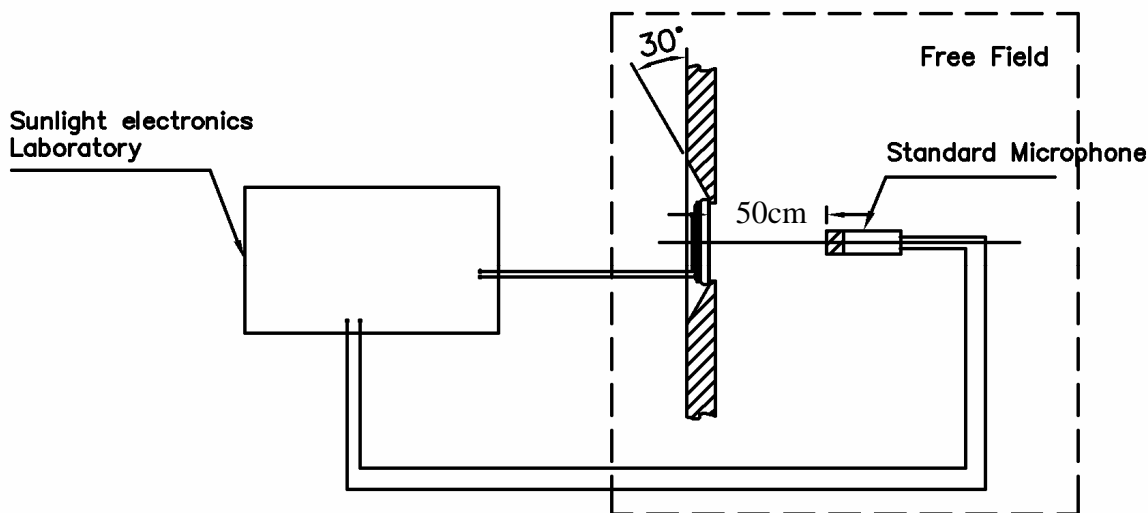
NO	PART NAME	MATERIAL	Q`TY
1	TERMINAL	P.C.B	1
2	MAGNET	Nd-Fe-B	1
3	WASHER	SPCC	1
4	DAPER	CLOTH	1
5	VOICE COIL	COPPER	1
6	FRAME	SPCC	1
7	DIAPHRAGM	PET	1
8	CAP	PET	1
9	GASKET	PAPER	1
10	YOKE	SPCC	1

暫定版
2013.02.20
工程課

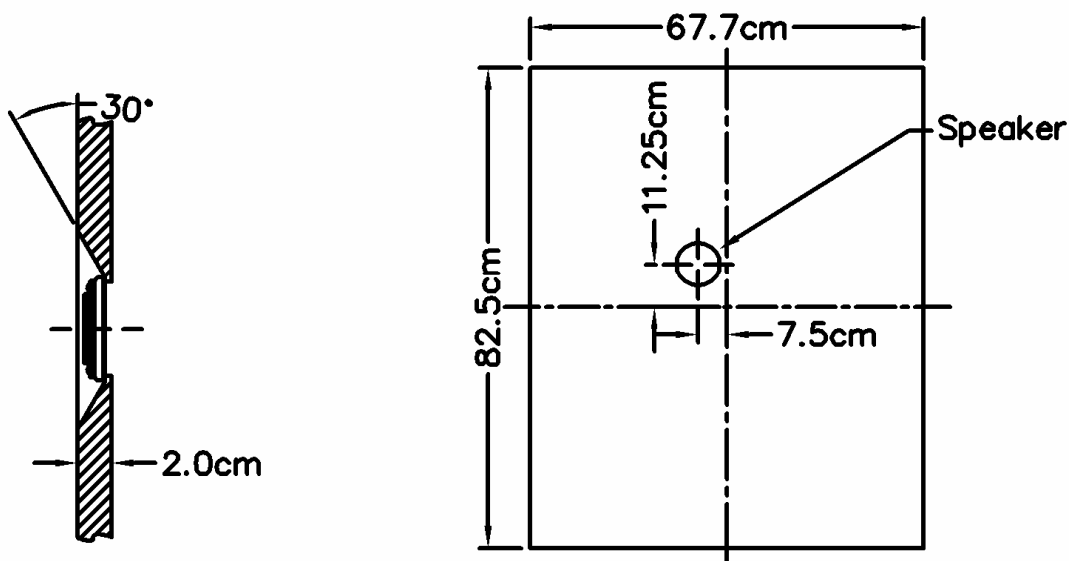
4. Test Method

4.1 Measurement Diagram

Electroacoustic
Testing Adapter



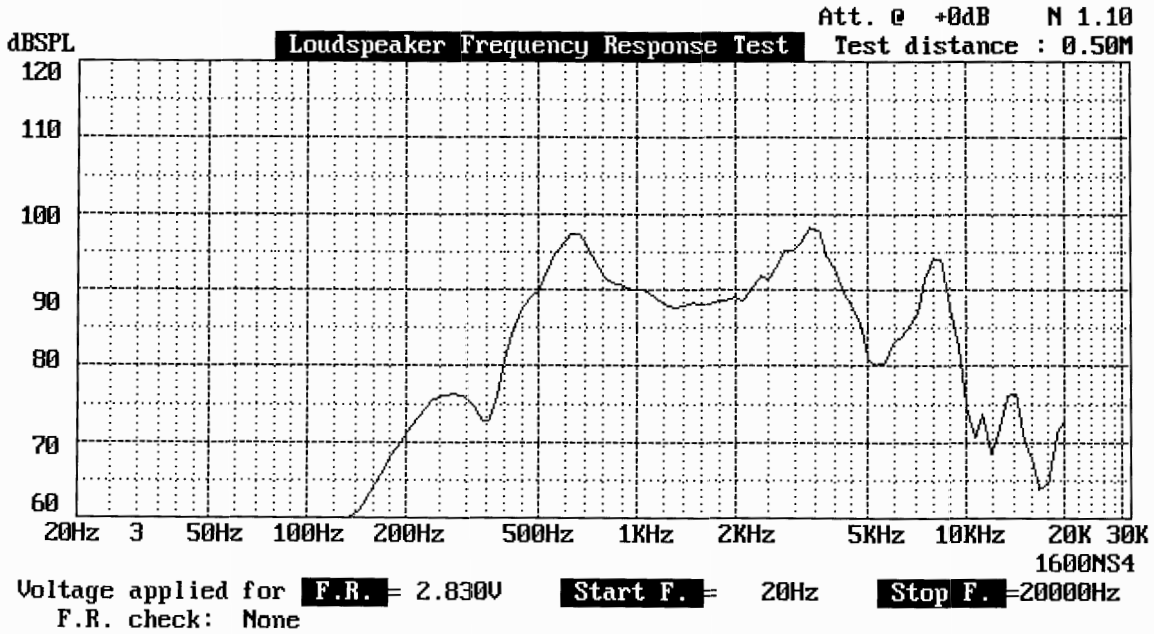
4.2 Standard Baffle



暫定版
2013.02.20
工程課

5. Frequency Resonance

Firm:1 Model:1 DATE:01-11-2013 TIME:13:57:25
 Real 1000Hz Sens.= 89.9dB SPL Pass F.R.: Pass DCR: 8.19Ω Pass
 Average SPL= 88.9dB SPL Pass (1000;1200;1500; 2000Hz) Sweep Speed: 1/12 Oct.



6. AC Impedance curve

Firm:1 Model:1 DATE:01-11-2013 TIME:13:55:00
 Start Freq. = 20Hz Stop Freq. = 10000Hz Sweep Speed: 1/12 Oct.
 ACV = 1.000V ACZ = 7.82 Ω @ 1000Hz. (Real)
 Fo = 600Hz; Qm = 8.39; Qe = 7.60; Qt = 3.99; DCR = 7.50Ω.

