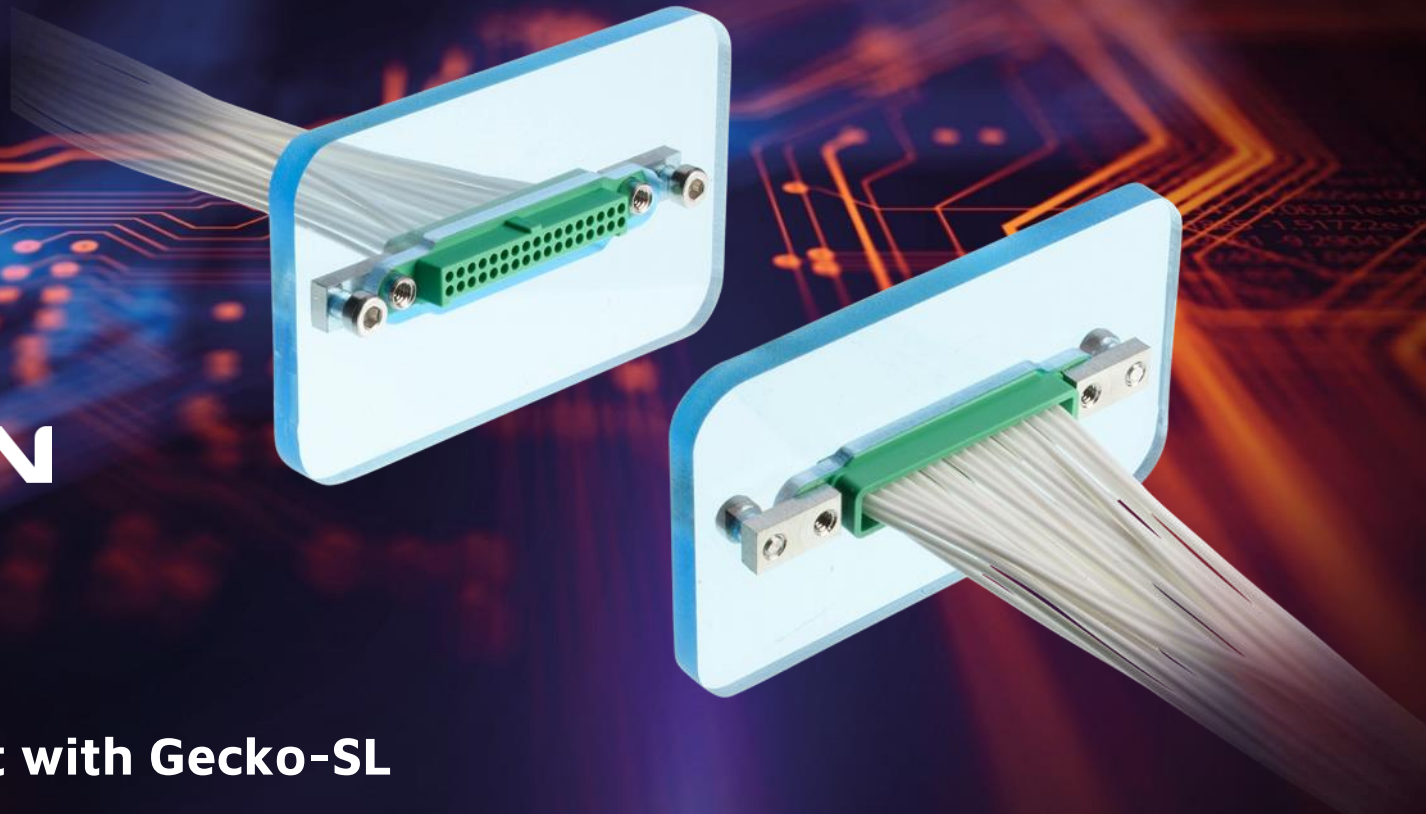


**HARWIN**



**Panel Mount with Gecko-SL**





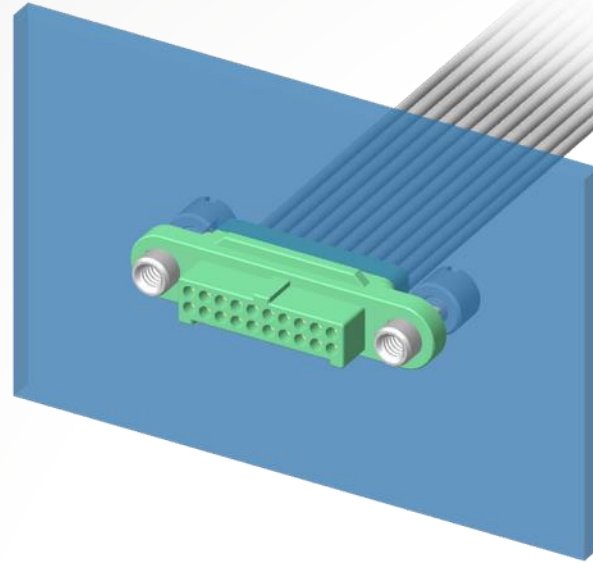
## PANEL MOUNT WITH GECKO-SL - CONTENTS

Section	Page
Introduction	<a href="#">3-4</a>
Male <b>Rear</b> Panel Mount (Standard Gender screw-loks)	<a href="#">5</a>
▪ Attaching to Panels	<a href="#">6</a>
▪ Mating Female connectors	<a href="#">7</a>
Female <b>Rear</b> Panel Mount (Reverse Fix screw-loks)	<a href="#">8</a>
▪ Mating Male connectors	<a href="#">9</a>
Male <b>Front</b> Panel Mount (Standard Gender screw-loks)	<a href="#">10</a>
▪ Attaching to Panels	<a href="#">11</a>
▪ Mating Female connectors	<a href="#">12</a>

Section	Page
Female <b>Front</b> Panel Mount (Reverse Fix screw-loks)	<a href="#">13</a>
▪ Mating Male connectors	<a href="#">14</a>
Male <b>Front</b> Panel Mount with Metal Backshells	<a href="#">15</a>
▪ Mating Female connectors	<a href="#">16</a>
Female <b>Front</b> Panel Mount with Metal Backshells	<a href="#">17</a>
▪ Mating Male connectors	<a href="#">18</a>
▪ Braiding	<a href="#">19</a>
Help from Harwin	<a href="#">20-22</a>



## WHAT IS PANEL MOUNT?



**HRI**  
RANGE

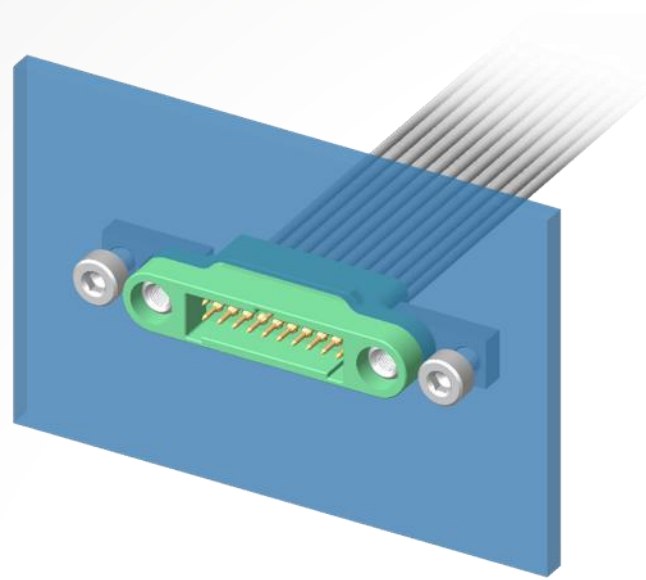
Panel Mount is a mechanical feature or features built into the design of a connector half. It allows the connector to be secured to an equipment panel, external case or enclosure. Often (but not always), connectors fitted with panel mount features will be cable connectors.

Read more information about panel mount on our [training blog post](#).



## CAN I ACHIEVE PANEL MOUNT WITH GECKO?

**YES** 

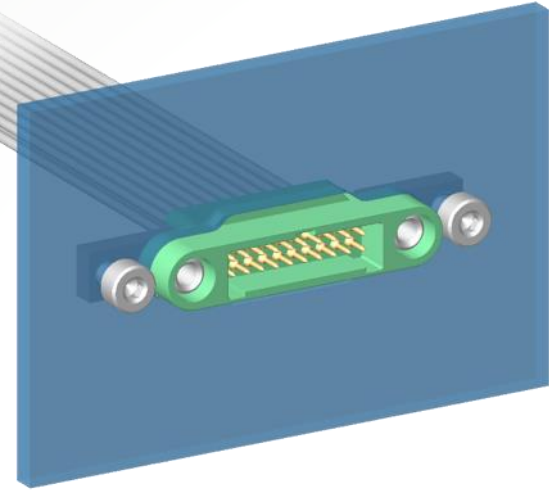


Yes, you can achieve both Front Panel mounted and Rear Panel Mounted with [Gecko](#). This Training Module gives details and part numbers to help you choose the right combination for signal-only [Gecko-SL connectors](#).

By choosing the same jackscrew configurations, these cable-to-panel connections can also be achieved with mixed signal & power connections from the [Gecko-MT range](#). And you can also select the same screw-lok combinations fitted to ready-made cable assemblies.

## MALE REAR PANEL MOUNT – USING STANDARD GENDER

Rear Panel  
Mount Male



Rear Panel Mount for the male cable connector uses standard gender screw-loks with extended lugs, giving additional M2 threaded fixings:

- Male Housing (with extended lug screw-loks fitted) = [G125-324XX96M5](#)
- XX = Number of contacts: 06, 10, 12, 16, 20, 26, 34 or 50
- Male contact, sold separately = [G125-1010005](#) (for 26 AWG) or [G125-1020005](#) (for 28-32 AWG)
- Contact Finish is gold

## MALE REAR PANEL MOUNT – USING STANDARD GENDER



**G125-4520000B**

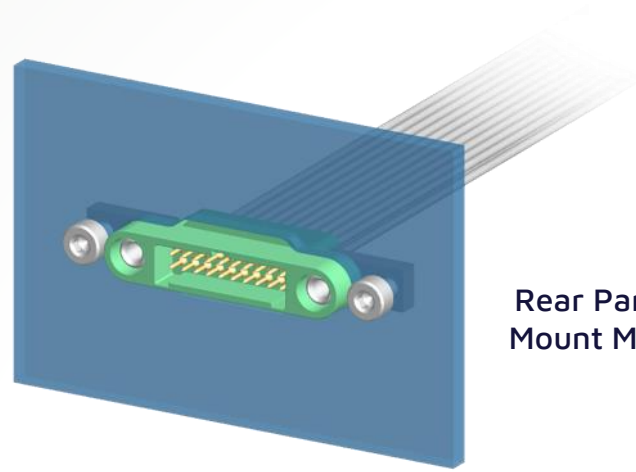
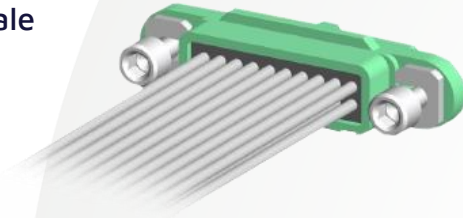


To fix these connectors to your panel, the extended lugs already have internal threads. Just add M2 threaded bolts at the front of the panel.

- Ensure you specify adequate thread length on the bolt to pass through the panel and fasten to the jackscrew lug.
- For thinner panels (less than 3mm), our 5mm bolts will be suitable: [G125-4520000B](#) (with a hex socket head).
- Any bolt with an M2 x 0.4 thread can be used for thicker panels.

## MALE REAR PANEL MOUNT – USING STANDARD GENDER

Mating Cable  
Female



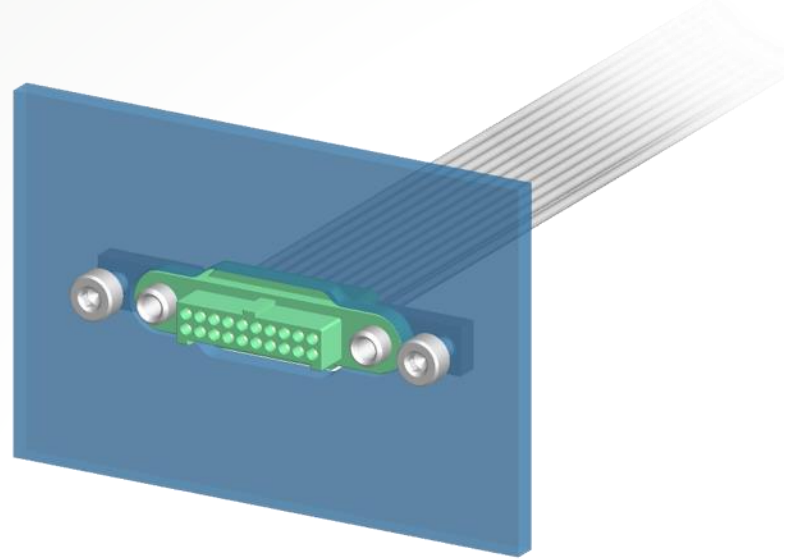
Rear Panel  
Mount Male

The mating Female connector requires standard gender floating screw-loks:

- Female housing = [G125-224XX96F1](#)
- XX = Number of contacts: 06, 10, 12, 16, 20, 26, 34 or 50
- Female contact, sold separately = [G125-0010005](#) (for 26 AWG) or [G125-0020005](#) (for 28-32 AWG)
- Contact Finish is gold

## FEMALE REAR PANEL MOUNT – USING REVERSE FIX

Rear Panel  
Mount Female

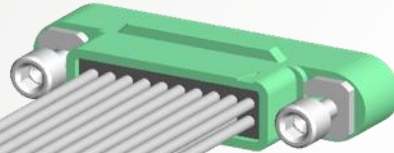


Using the female reverse fix screw-loks, the female connector is mounted using the same method as the rear panel male (see [page 6](#)):

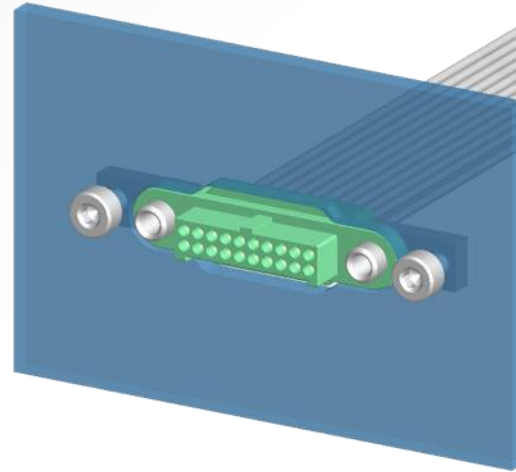
- Female Housing (with extended lug screw-loks fitted) = [G125-224XX96F5](#)
- XX = Number of contacts: 06, 10, 12, 16, 20, 26, 34 or 50
- Female contact, sold separately = [G125-0010005](#) (for 26 AWG) or [G125-0020005](#) (for 28-32 AWG)
- Contact Finish is gold

## FEMALE REAR PANEL MOUNT – USING REVERSE FIX

Mating Cable  
Male



Rear Panel  
Mount Female

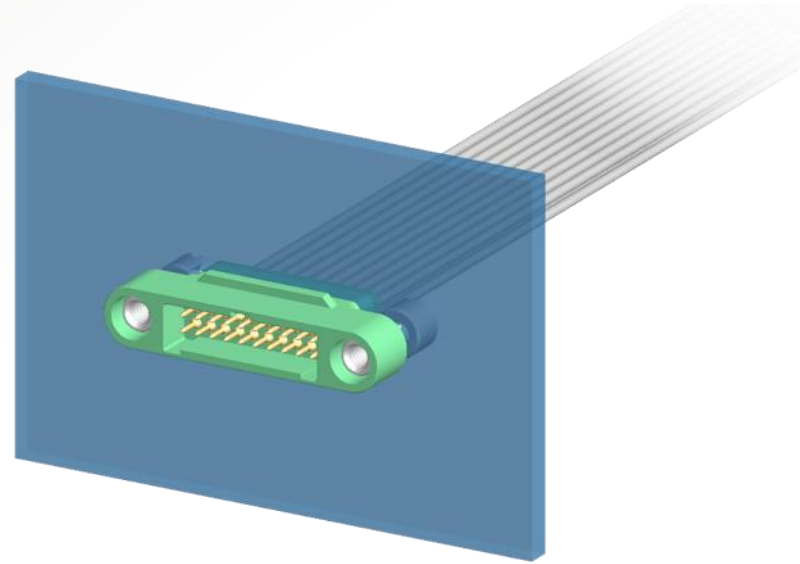


The mating Male connector also requires reverse fix floating screw-loks:

- Male housing = [G125-324XX96M3](#)
- XX = Number of contacts: 06, 10, 12, 16, 20, 26, 34 or 50
- Male contact, sold separately = [G125-1010005](#) (for 26 AWG) or [G125-1020005](#) (for 28-32 AWG)
- Contact Finish is gold

## MALE FRONT PANEL MOUNT – USING STANDARD GENDER

Front Panel  
Mount Male



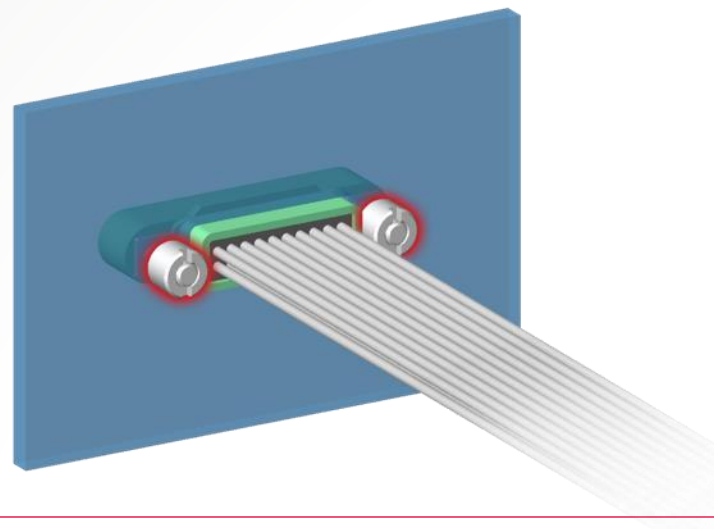
Front Panel Mount for the male cable connector uses the same standard gender screw-loks as board mount for PCB connectors:

- Male Housing = [G125-324XX96M2](#)
- XX = Number of contacts: 06, 10, 12, 16, 20, 26, 34 or 50
- Male contact, sold separately = [G125-1010005](#) (for 26 AWG) or [G125-1020005](#) (for 28-32 AWG)
- Contact Finish is gold

## MALE FRONT PANEL MOUNT – USING STANDARD GENDER



**G125-4510000B**

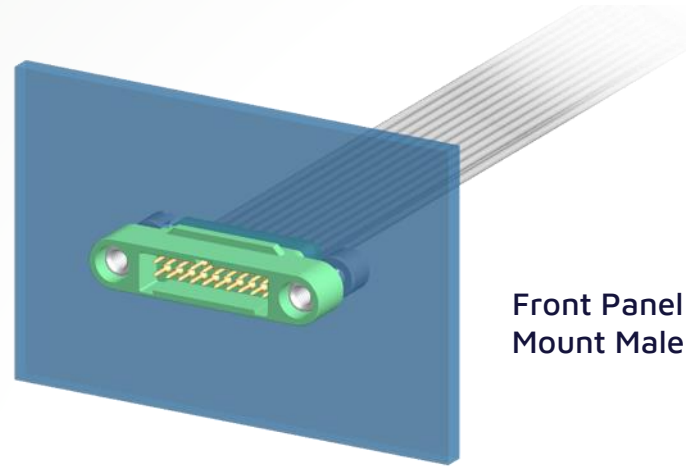
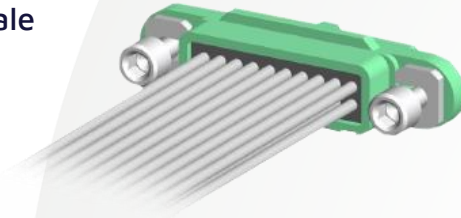


To fix these connectors to your panel, the fixings have rear studs, externally threaded to M2 x 0.4. These pass through the panel and are secured with nuts at the rear face of the panel.

These M2 slotted nuts will need to be ordered separately – the part number is [G125-4510000B](#).

## MALE FRONT PANEL MOUNT – USING STANDARD GENDER

Mating Cable  
Female



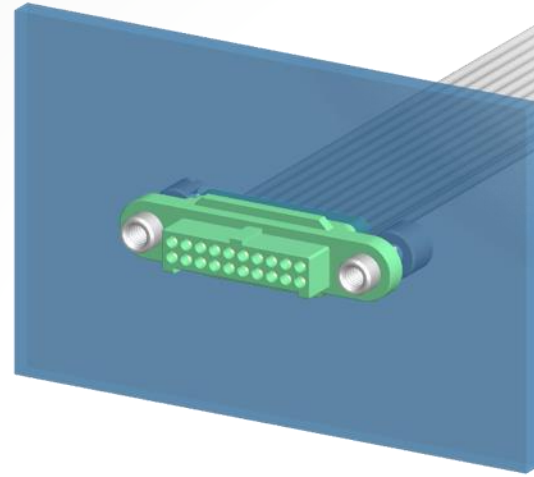
Front Panel  
Mount Male

The mating Female connector is the same as mating with the Rear Panel Mount, requiring standard gender floating screw-loks:

- Female housing = [G125-224XX96F1](#)
- XX = Number of contacts: 06, 10, 12, 16, 20, 26, 34 or 50
- Female contact, sold separately = [G125-0010005](#) (for 26 AWG) or [G125-0020005](#) (for 28-32 AWG)
- Contact Finish is gold

## FEMALE FRONT PANEL MOUNT – USING REVERSE FIX

Front Panel  
Mount Female

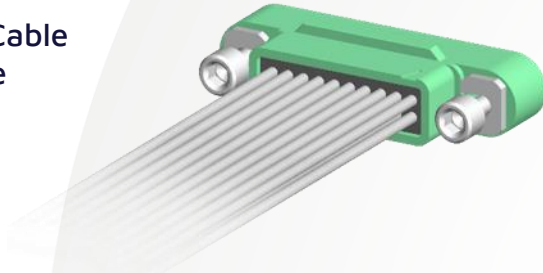


Using the female reverse fix screw-loks, the female connector is mounted using the same method as the front panel male (see [page 10](#)):

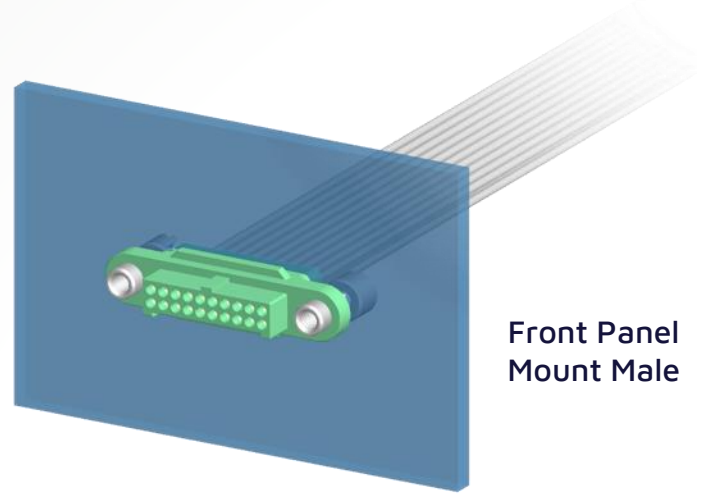
- Female Housing = [G125-224XX96F3](#)
- XX = Number of contacts: 06, 10, 12, 16, 20, 26, 34 or 50
- Female contact, sold separately = [G125-0010005](#) (for 26 AWG) or [G125-0020005](#) (for 28-32 AWG)
- Contact Finish is gold

## FEMALE FRONT PANEL MOUNT – USING REVERSE FIX

Mating Cable  
Male



Front Panel  
Mount Male

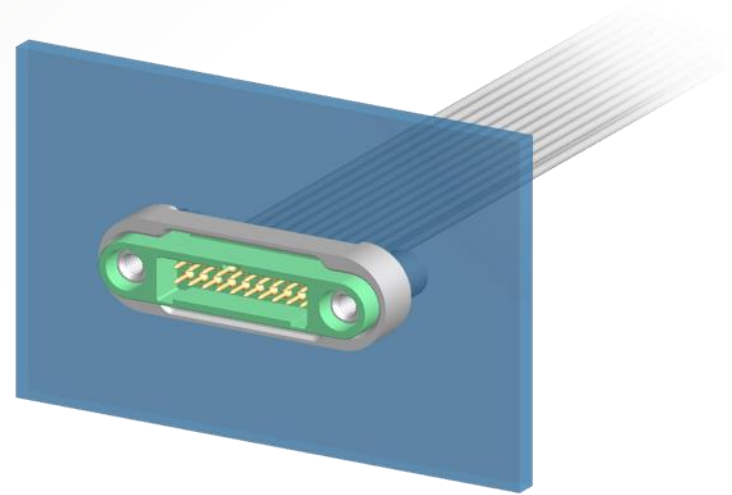


The mating Male connector is the same as mating with the Rear Panel Mount, requiring reverse fix floating screw-loks:

- Male housing = [G125-324XX96M3](#)
- XX = Number of contacts: 06, 10, 12, 16, 20, 26, 34 or 50
- Male contact, sold separately = [G125-1010005](#) (for 26 AWG) or [G125-1020005](#) (for 28-32 AWG)
- Contact Finish is gold

## MALE FRONT PANEL MOUNT – USING METAL BACKSHELLS

Panel Mount Male with  
Metal Backshells

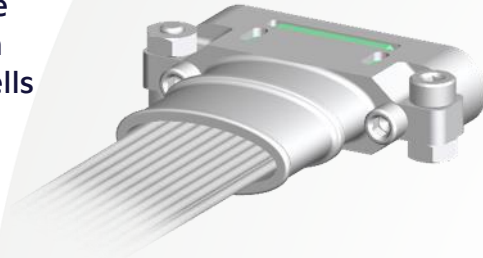


You can add metal backshells to the connection, for additional durability or shielding (with the same front panel male from [page 10](#)):

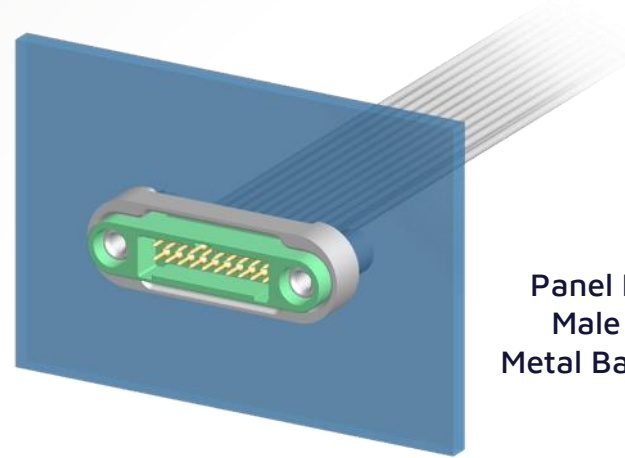
- Male Housing = [G125-324XX96M2](#), Panel Mount Backshell = [G125-960XX02](#)
- XX = Number of contacts: 06, 10, 12, 16, 20, 26, 34 or 50
- Male contact, sold separately = [G125-1010005](#) (for 26 AWG) or [G125-1020005](#) (for 28-32 AWG)
- Contact Finish is gold

## MALE FRONT PANEL MOUNT – USING METAL BACKSHELLS

Mating Cable  
Female with  
Metal Backshells



Panel Mount  
Male with  
Metal Backshells

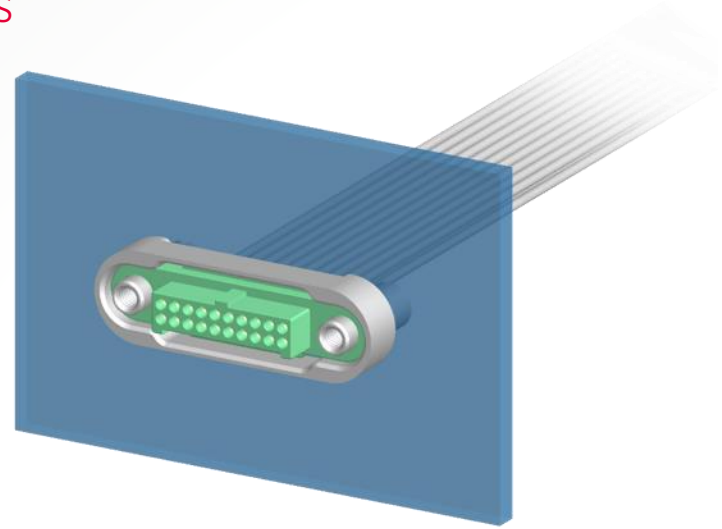


The mating cable metal backshell kit comes with the applicable longer screw-lok fixings:

- Female Housing = [G125-224XX9600](#), Cable Backshell Kit = [G125-964XXF1](#)
- XX = Number of contacts: 06, 10, 12, 16, 20, 26, 34 or 50
- Female contact, sold separately = [G125-0010005](#) (for 26 AWG) or [G125-0020005](#) (for 28-32 AWG)
- Contact Finish is gold

## FEMALE FRONT PANEL MOUNT – USING METAL BACKSHELLS

Panel Mount Female  
with Metal Backshells

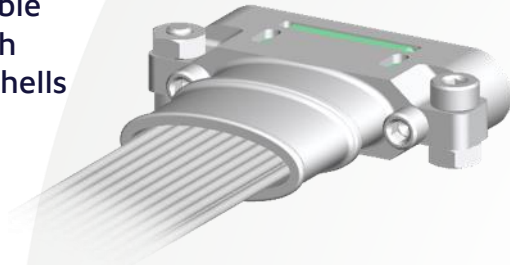


This can also be used with reverse fix and panel mounted female connectors (with the same front panel female from [page 13](#)):

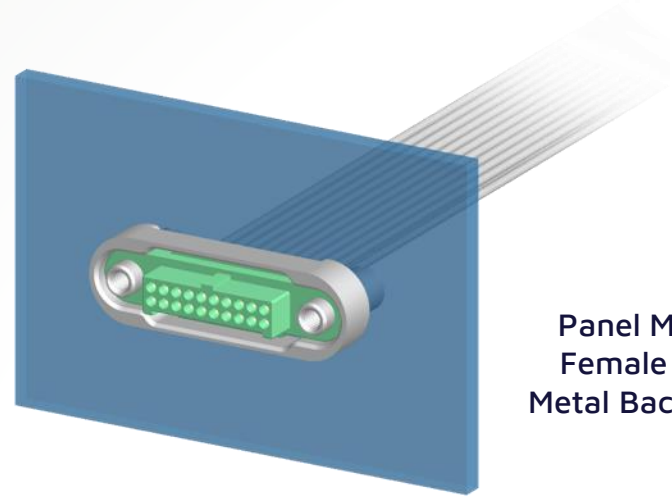
- Female Housing = [G125-224XX96F3](#), Panel Mount Backshell = [G125-960XX02](#)
- XX = Number of contacts: 06, 10, 12, 16, 20, 26, 34 or 50
- Female contact, sold separately = [G125-0010005](#) (for 26 AWG) or [G125-0020005](#) (for 28-32 AWG)
- Contact Finish is gold

## FEMALE FRONT PANEL MOUNT – USING METAL BACKSHELLS

Mating Cable  
Male with  
Metal Backshells



Panel Mount  
Female with  
Metal Backshells



The same cable metal backshell kit works with both the male and female connectors:

- Male Housing = [G125-324XX9600](#), Cable Backshell Kit = [G125-964XXF1](#)
- XX = Number of contacts: 06, 10, 12, 16, 20, 26, 34 or 50
- Male contact, sold separately = [G125-1010005](#) (for 26 AWG) or [G125-1020005](#) (for 28-32 AWG)
- Contact Finish is gold

## FRONT PANEL MOUNT – USING METAL BACKSHELLS

Add Metal Braiding for full shielding



Add Plastic Braiding for durability, protection (not shown)

To complete the full shielding effect, use braiding on the external cable assembly to shield the wires. The braid can be attached to the rear collar of the cable metal backshell. Alternatively, affix plastic braiding just for added durability and cable protection.

- Micro-Band or BAND-IT Ties = [M80-9470000](#) (206.8mm) or [M80-9480000](#) (362mm) – use with applicable BAND-IT tooling
- Plastic Cable ties for use with plastic braid – not available from Harwin

## CONSIDERATIONS



When specifying connectors from this Training Module, please consider:

- Not all connector variations will be stocked, some will be made-to-order – please check availability in advance of your production requirements.
- We supply some full cable assemblies as standard, but we can also manufacture a wide range of cable assemblies to order, including braided, labelled, twisted pairs, and a variety of wire insulation colors. [Contact us](#) for help!

# Learn more about our other ranges



HIGH RELIABILITY  
WITH SUPREME  
PERFORMANCE



INNOVATIVE  
DESIGNS FOR  
EASY ASSEMBLY



DEPENDABLE  
CONNECTIVITY  
ACROSS THE BOARD

Find out more about our full range  
of inter-connection solutions at

[www.harwin.com](http://www.harwin.com)

**HRi**  
RANGE

**EZi**  
RANGE

**BBi**  
RANGE

# Get Help from a Harwin Expert

Our experts are specialists in their field with many years of experience in their respective roles and industries.

Find an expert that can help you with your enquiry.

[Click Here >>](#)

CAD Models and Evaluation Samples also available at [www.harwin.com](http://www.harwin.com)



# Contact Us

Europe, Middle East & Africa

T: +44 (0)23 9231 4545

E: [technical@harwin.com](mailto:technical@harwin.com)

Americas

T: +1 603 893 5376

E: [technical-us@harwin.com](mailto:technical-us@harwin.com)

Asia Pacific

T: +65 6 779 4909

E: [technical-asia@harwin.com](mailto:technical-asia@harwin.com)

**[WWW.HARWIN.COM](http://WWW.HARWIN.COM)**