

# Customer Information Sheet

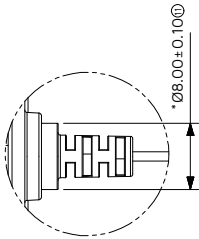
IF IN DOUBT - ASK

©

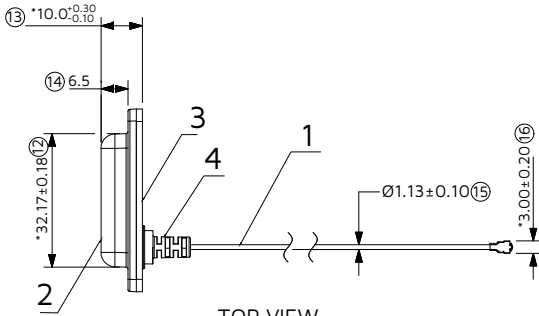
NOT TO SCALE

THIRD ANGLE PROJECTION

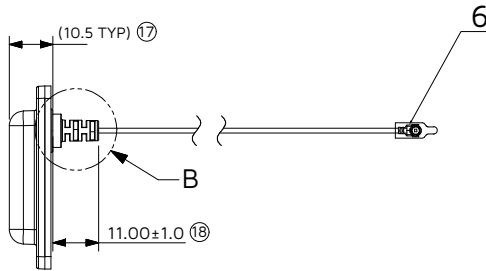
ALL DIMENSIONS IN mm



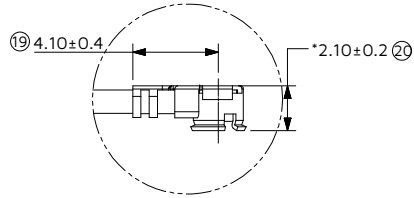
DETAIL B  
SCALE 2:1



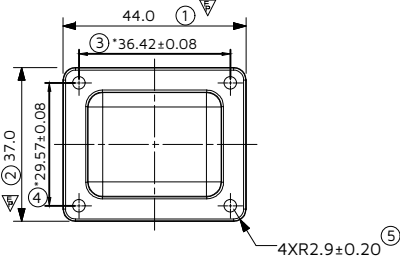
TOP VIEW



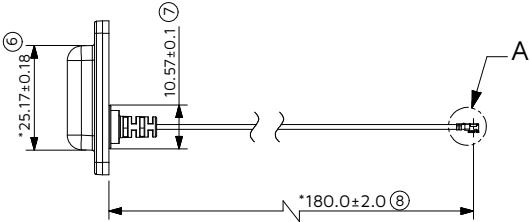
BOTTOM VIEW



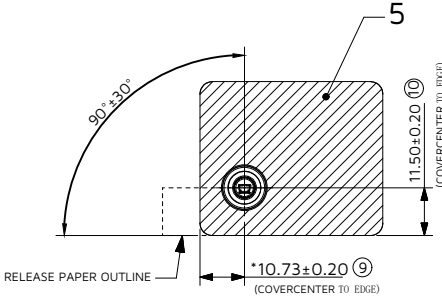
DETAIL A  
SCALE 5:1  
MHF-1 CONNECTOR



LEFT SIDE VIEW



FRONT VIEW



RIGHT SIDE VIEW

- NOTE:
- 1.FREQUENCY RANGE : 2.4-2.485GHz  
5.15-5.85GHz
  - 2.Peak Gain (Max): 2.4-2.485GHz 1.8dBi  
5.15-5.85GHz 5.5dBi
  - 3.Input Impedance : 50 Ohms
  - 4.Operating with matching: -40℃~ 85℃
  - 5.Storage with matching : -40℃~ 85℃
  - 6.Connector type : IPEX MHF1
  - 7.The size marked with " \* " is the key inspection size
  - 8.Materials comply with ROHS standards
  - 9.Holding force of terminals and wires ≥1.0Kg

10	FPCB(FYJD040G)	1PCS
9	Square plastic case	1PCS
8	LC690 GLUE	1PCS
7	SOLDER WIRE	1PCS
6	PROTECTING TUBE	1PCS
5	ADHESIVE (FYJD150G)	1PCS
4	SILICONE PLUG	1PCS
3	TOP COVER	1PCS
2	BOTTOM COVER	1PCS
1	1.13 LOWLOSS Cable Black IPEX	1PCS
NO.	NAME	Part

KC	1	03JUL25	--
NAME	ISS.	DATE	CN/CO
APPROVED: WALKER/MEIZY			
CHECKED: THIRI			
DRAWN: KC			

HARWIN

www.harwin.com

TOLERANCES

X. = ±1mm  
X.X = ±0.50mm  
X.XX = ±0.20mm  
X.XXX = ±0.01mm

ANGLES = ±5°  
UNLESS STATED

THIS DRAWING AND ANY INFORMATION OR DESCRIPTIVE MATTER SET OUT HEREON ARE CONFIDENTIAL AND COPYRIGHT PROPERTY OF THE HARWIN GROUP AND MUST NOT BE DISCLOSED, LOANED, COPIED OR USED FOR MANUFACTURING, TENDERING OR FOR ANY OTHER PURPOSE WITHOUT THEIR WRITTEN PERMISSION.

MATERIAL & FINISH:

TITLE:

On-Metal Dual-Band Wi-Fi Antenna  
(2.4~2.485GHz, 5.15~5.85GHz), U.FL Cable

DRAWING NUMBER:

MMANT-1500701-UF-000

SHT  
1  
OF  
1