

Customer Information Sheet

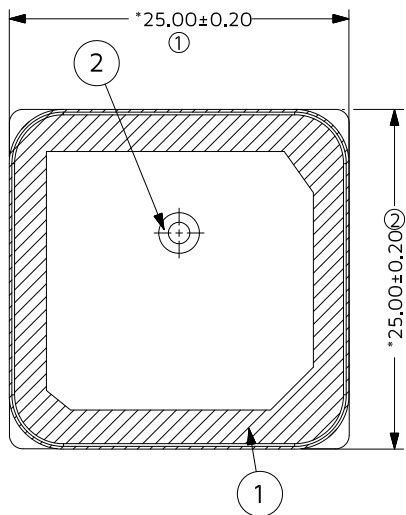
IF IN DOUBT - ASK



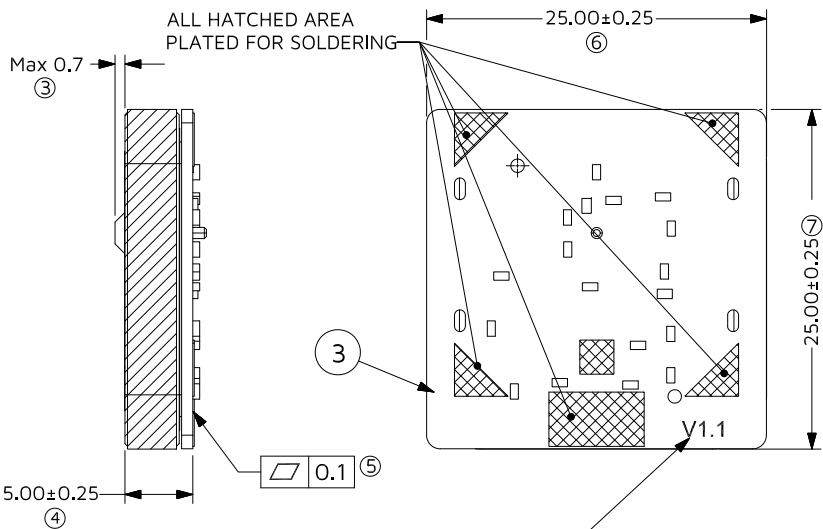
NOT TO SCALE

THIRD ANGLE PROJECTION

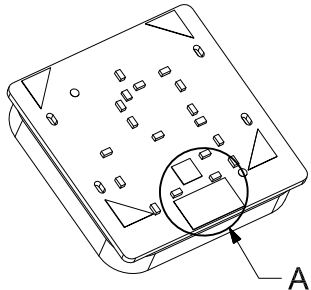
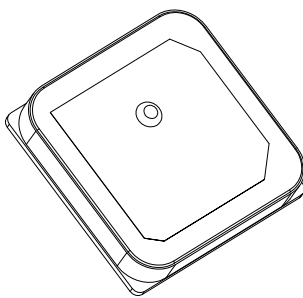
ALL DIMENSIONS IN mm



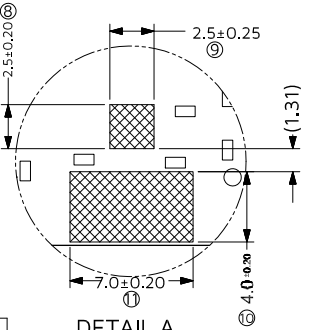
CERAMIC ANTENNA DIMENSION



PRINT TEXT



3D VIEW



DETAIL A
SCALE 5:1

NOTES:

- 1.RF FUNCTION MUST FOLLOW YOUR OWN DATASHEET DEFINED THAT OUR RF ENGINEER HAVE APPROVED;
- 2.MAKE A GOOD PROTECTION(NO DAMAGE TO COMPONENTS AND ESD ISSUE)DURING TRANSFORMATION BECAUSE OF NO METAL SHIELDING;
- 3.GAIN :28±3DB
- 4.ESD TEST FOLLOW OUR SPEC IN THE NEXT PAGE SHOWN.
- 5.PCB DESIGN REFERS TO MOLEX'S GERBER FILE

ESD Test (Operational test)

- Condition:
- Contact: ±8kV Contact discharge to enclosure
 - Air: ±15kV,±20kV,±25kV Air discharge in vicinity of enclosure
 - Tests shall be performed with antenna GNSS facing sky
 - Device must remain powered fo duration of test and be fully functional
- DUT state:
- Criterion:
- Contact: No error permitte in LNA
- Air: Recoverabel error permitted in LNA(error is remedied by power cycle)
- Furthermore,confirm:
- RF parameters in spec
 - GNSS current draw does not deviate excessively from nominal
 - No components damage

BOM-TABLE A		
ITE	MATERIAL	DESCRIPTION
1	GPS-ANTENNA	DIELECTRIC CERAMIC (DIELECTRIC CONSTANT 21)
		PIN
		PIN/COATING
		SILVER LAYER
		GULE-NITTO 5000NS
		SOLDERING Tin
2	GPS-PCB(LNA)	FR4(DOUBLE LAYER)-KB6160
		INK SOLDER MASK
		CHARACTER INK
		NI
	RESISTANCE	IMMERSION GOLD
		REFERENCE PPER
		REFERENCE PPER
		REFERENCE PPER
	INDUCTANCE	REFERENCE PPER
		REFERENCE PPER
	CAPACITANCE	REFERENCE PPER
		REFERENCE PPER
	AMPLIFIER TUBE	REFERENCE PPER
		REFERENCE PPER
	TVS	REFERENCE PPER
		REFERENCE PPER
	FILTER	REFERENCE PPER
		REFERENCE PPER

KC	1	03JUL25	--
NAME	ISS.	DATE	CN/CO
APPROVED: WALKER/MEIZY			
CHECKED: THIRI			
DRAWN: KC			

HARWIN

www.harwin.com

TOLERANCES

X. = ±1mm
X.X = ±0.50mm
X.XX = ±0.20mm
X.XXX = ±0.01mm
ANGLES = ±5°
UNLESS STATED

THIS DRAWING AND ANY INFORMATION OR DESCRIPTIVE MATTER SET OUT HEREON ARE CONFIDENTIAL AND COPYRIGHT PROPERTY OF THE HARWIN GROUP AND MUST NOT BE DISCLOSED, LOANED, COPIED OR USED FOR MANUFACTURING, TENDERING OR FOR ANY OTHER PURPOSE WITHOUT THEIR WRITTEN PERMISSION.

MATERIAL & FINISH:

TITLE:

GNSS RHCP Patch Antenna,
GPS L1 (1575.42MHz), Adhesive Mount

DRAWING NUMBER:

MMANT-1600700-PP-000

SHT
1
OF
2

Customer Information Sheet

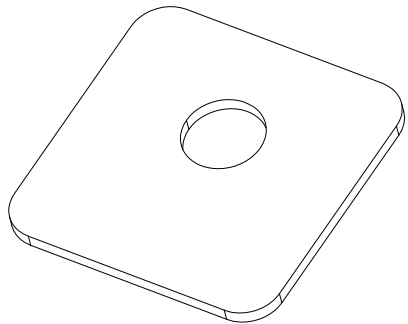
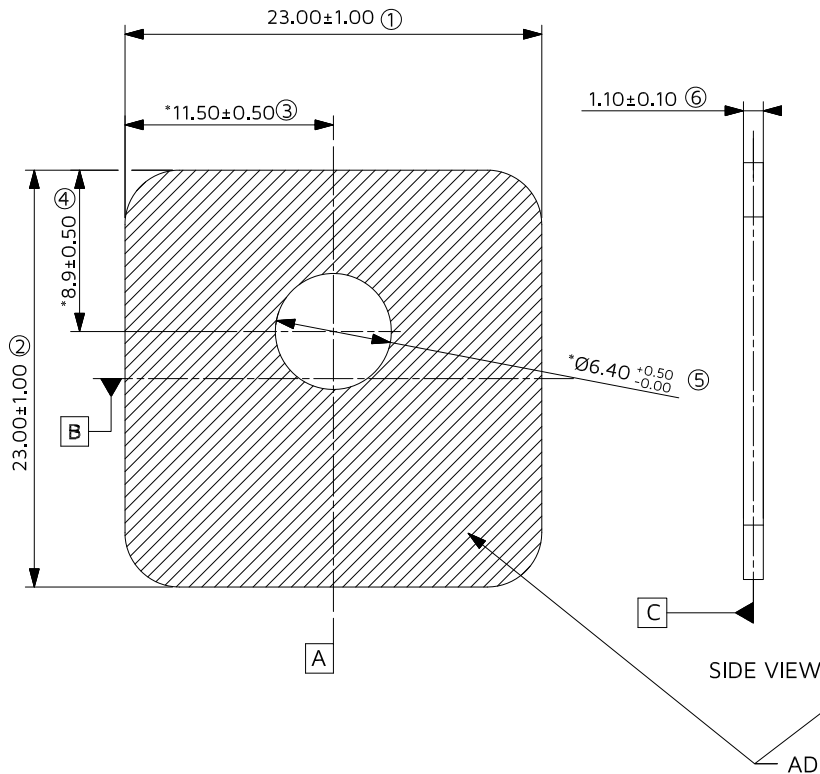
IF IN DOUBT - ASK

©

NOT TO SCALE

THIRD ANGLE PROJECTION

ALL DIMENSIONS IN mm



3D VIEW

BOTTOM VIEW

SIDE VIEW

ADHESIVE AREA

NOTES:

- 1.ADHESIVE MATERIAL:3M VHB 4950,THICKNESS:1.1mm,WHITE;
- 2.THE SURFACE OF THE PRODUCT HAS NO DEFECTS SUCH AS DAMAGE OR MISSING CORNERS;
- 3.THE APPEARANCE OF THE GLUE IS COMPLETE,NO SHEDDING,NO ADHESION;
- 4.OPERATING TEMPERATURE RANGE:-40°C~105°C;
- 5.HALOGEN-FREE;
- 6.COMPLY WITH ROHS;
- 7.THE BACKING GLUE SHOULD BE ATTACHED TO THE CERAMIC

KC	1	03JUL25	--
NAME	ISS.	DATE	CN/CO
APPROVED: WALKER/MEIZY			
CHECKED: THIRI			
DRAWN: KC			

HARWIN

www.harwin.com

TOLERANCES

X. = ±1mm
X.X = ±0.50mm
X.XX = ±0.20mm
X.XXX = ±0.01mm

ANGLES = ±5°
UNLESS STATED

THIS DRAWING AND ANY INFORMATION OR DESCRIPTIVE MATTER SET OUT HEREON ARE CONFIDENTIAL AND COPYRIGHT PROPERTY OF THE HARWIN GROUP AND MUST NOT BE DISCLOSED, LOANED, COPIED OR USED FOR MANUFACTURING, TENDERING OR FOR ANY OTHER PURPOSE WITHOUT THEIR WRITTEN PERMISSION.

MATERIAL & FINISH:

TITLE:

GNSS RHCP Patch Antenna,
GPS L1 (1575.42MHz), Adhesive Mount

DRAWING NUMBER:

MMANT-1600700-PP-000

SHT
2 OF 2